





LOCATION

Centrally located in downtown Las Vegas, LVMD encompasses approximately 684 acres with its 252 core acres bounded by both sides of Charleston Boulevard on the south, Rancho Drive on the west, Alta Drive on the north and Martin L. King Boulevard on the east.



LVMD MISSION

By 2030, the Las Vegas Medical District will be the clinical care, research, wellness, education and training center of Southern Nevada and the premier academic medical district in the southwestern United States.



OVERVIEW

Established by the Las Vegas City Council in 1997, the Las Vegas Medical District (LVMD) is now evolving as one of the most important economic development projects in Southern Nevada, enhancing and expanding access to quality medical care, attracting new, high-paying employers to the region and advancing a higher quality of life.

LVMD institutions are responding to the COVID-19 pandemic, including the longest continuously operating test site in the state at the UNLV School of Medicine campus, serving more than 18,000 Nevadans with significant support from the Nevada National Guard. Other LVMD healthcare institutions were also leaders in the fight against the pandemic and continue to offer testing and care, while encouraging Southern Nevadans to prioritize their health by returning to their doctors and medical

providers who are following CDC guidelines and protocols to ensure they can deliver healthcare in a safe manner.

The medical district is a collaborative effort between the city of Las Vegas and the downtown Las Vegas medical and health care community. The LVMD creates an environment that supports future and continued development of businesses and real property within the district.

INCENTIVE PROGRAMS

There are a variety of incentive program opportunities for new businesses, new development, interior and exterior rehabilitation of older buildings. These include the LVMD Targeted Industry Program which provides a qualified

property owner and/or business owner financial assistance for undertaking interior and exterior rehabilitation, and/or expansion of commercial or industrial properties for specific business types relocating or expanding in portions of the LVMD. In addition, city of Las Vegas is offering a waiver of business license and origination fees for qualifying new businesses that locate within portions of the LVMD.

Portions of the LVMD fall within the Las Vegas Redevelopment Area and may be eligible for Tax Increment Financing, New Markets Tax Credits, Opportunity Zone Investments, Residential Improvement Program Grants, Office Tenant Incentives Grants and Visual Improvement Program Grants.

Businesses and developers may combine some of the incentives to maximize impact for their new or expansion projects.

CURRENTLY OPERATING WITHIN THE LVMD

- **UMC**
As the state's premier academic medical center, UMC offers the highest level of care available in Nevada - home to Nevada's only Level I Trauma Center, only Designated Pediatric Trauma Center, only Burn Care Center and only Center for Transplantation.
- **Children's Hospital of Nevada at UMC**
The state's only hospital to be recognized and accepted as an associate member of the Children's Hospital Association.
- **Cleveland Clinic Lou Ruvo Center for Brain Health**
Imaging almost any body part (via PET, CT, MRI) as well as providing treatment, groundbreaking clinical research and no-cost education and support services for families living with neurodegenerative diseases.
- **Valley Hospital Medical Center**
Acute care teaching hospital founded in 1972: comprehensive services include Emergency Care; Advanced Cardiovascular, Neurological and Surgical Programs; a certified Primary Stroke Center; Accredited Chest Pain Center; and Gynecological Oncology.
- **Horizon Specialty Hospital of Las Vegas**
A long term acute care hospital.
- **Desert Radiology**
Founded in 1966 and ranked among top 25 practices in the country. Delivering comprehensive diagnostic and interventional radiology services. Exclusive radiology partner of UMC, Valley Hospital and all Valley Health System hospitals.
- **Steinberg Diagnostic Medical Imaging**
Founded in 1988, largest locally owned and operated outpatient medical imaging company in Southern Nevada. Offering comprehensive diagnostic and interventional radiology services and the most advanced digital mammography.
- **Southwest Medical**
Founded in Las Vegas in 1972, part of OptumCare and Nevada's largest multi-specialty medical group.
- **OptumCare Cancer Center**
55,000-square-foot Cancer Center offering a variety of cancer treatment services for its patients including medical oncology, hematology, radiation oncology, surgical oncology, chemotherapy, immunotherapy, breast care, imaging.
- **Institutions of Higher Learning:**
 - UNLV School of Medicine
 - UNLV School of Dental Medicine
 - Clinical Simulation Center of Las Vegas
 - Milan Institute
 - Touro University (Valley is the teaching hospital for Touro)
 - UNLV School of Medicine Ackerman Center for Autism and Neurodevelopment Solutions



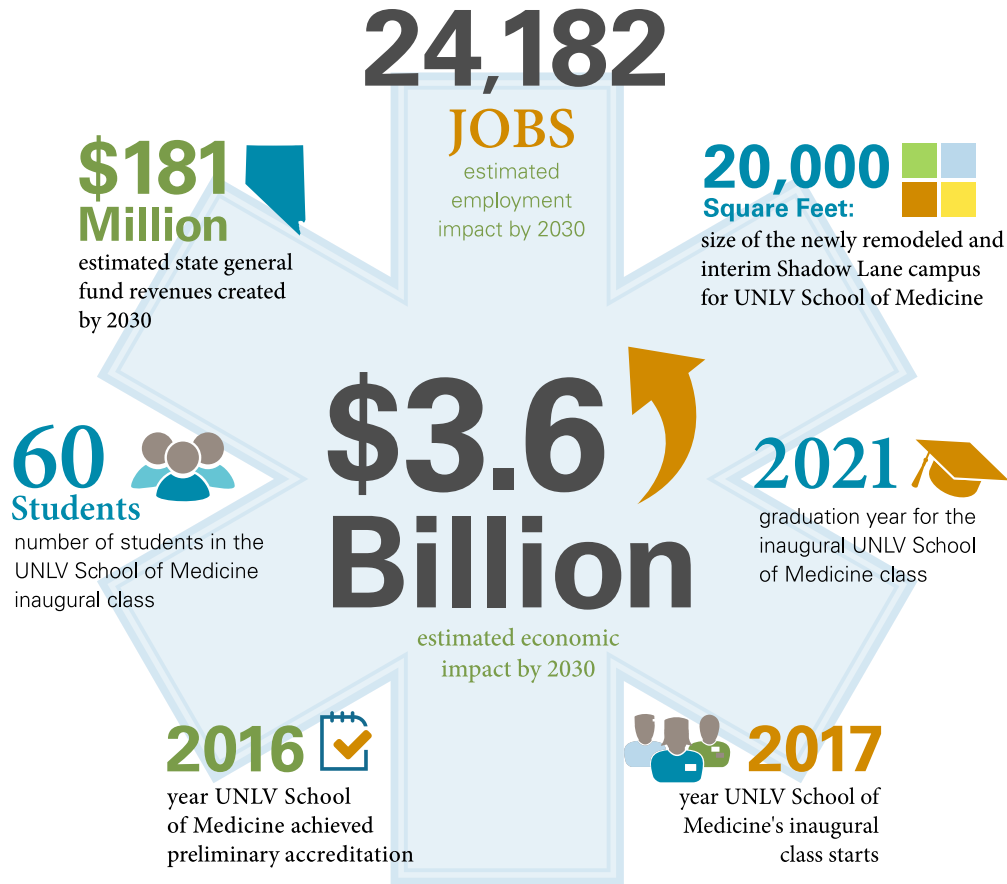
SPECIALIZED TRAUMA CARE

WE ARE HERE

Patient Brazyl Ward and Dr. Meena Vohra, M.D., FAAP,
Medical Director of Children's Hospital of Nevada at UMC.

LAS VEGAS MEDICAL DISTRICT

BY THE NUMBERS



684 Acres

252 core acres bounded by both sides of Charleston Boulevard on the south, Rancho Drive on the west, Alta Drive on the north, and Martin L. King Boulevard on the east



CURRENTLY OPERATING

WITHIN THE LVMD.



HISTORY

The land on which the Las Vegas Medical District sits is steeped in local history. Once used for agriculture, it was also home to an 80-acre dairy farm. In the 1920s, it was known as the Clark County Poor Farm because it housed handicapped and indigent men who worked the land. The area is also the former site of the Clark County Hospital, the genesis for today's UMC (University Medical Center).

2020

- Dr. Marc J. Kahn joins UNLV School of Medicine as new dean (April)
- UMC became the first and only hospital in Nevada to offer universal COVID-19 testing to every admitted patient, significantly improving the hospital's ability to quickly identify and isolate patients with active COVID-19 infections.
- UMC offers Nevada's highest-capacity COVID-19 lab with the ability to run 10,000 COVID-19 tests each day

2019

- More than \$155 million dollars has been pledged to underwrite construction of a Medical Education Building for UNLV School of Medicine that will serve as the school's permanent campus.
- To date, the city of Las Vegas has spent \$73 million on LVMD infrastructure improvements with an additional \$121 million allocated for future work
- Cleveland Clinic celebrates its 10th anniversary in Nevada and marks more than 165,000 patient visits and 70 clinical trials conducted in the LVMD
- NSHE Regents approve the sale of \$125 million in bonds to finance a UNLV School of Medicine building
- UMC trauma surgeon, Dr. John Fildes, chosen as interim dean as founding Dean Barbara Atkinson transitions to an advisory role
- OptumCare Cancer Center opens in LVMD

- Delta Dental Community Care Foundation gives a \$50,000 grant to UNLV School of Dental Medicine to support Saturday Morning Community Clinics
- City of Las Vegas establishes fee waivers for qualified new businesses going into the medical district which can include processing fees, annual fees and origination fees

2018

- City of Las Vegas offers Medical District Targeted Industry Program (MD-TIP) incentives to property owners and/or business owners to encourage expansion/renovation of commercial or industrial properties
- \$5.3 million Department of Transportation (DOT) grant awarded to the city of Las Vegas and the Regional Transportation Commission of Southern Nevada (RTC) to fund the GoMed autonomous vehicle shuttle project to connect Downtown Las Vegas to the Las Vegas Medical District
- Desert Radiology is recognized as the No. 24 largest private U.S. radiology practice on the "Radiology 100" by Radiology Business Journal
- Cleveland Clinic Nevada selected to join the Parkinson's Foundation Center of Excellence global network, first and only in the state of Nevada
- Dedication of the Bearden Family Paseo also marks the official naming of Wellness Way (formerly Bearden and Goldring Avenue)

The Southern Nevada Health District building was constructed on the site in 1965. Today, the area is burgeoning with exciting new development, including plans for future buildings to house the growing UNLV School of Medicine.

- Steinberg Diagnostic Medical Imaging celebrates its 30th Anniversary
- First class of UNLV School of Medicine surgical residents graduates
- Form-based code formally adopted for use throughout the LVMD.

2017

- UNLV School of Medicine welcomes its inaugural class of 60 students on July 17, opening Southern Nevada's first allopathic school of medicine
- \$25 million donation by anonymous donor is accepted by UNLV School of Medicine
- State Legislature approves \$25 million in additional funding for the medical school, above and beyond the \$21.8 million for 2017-18 and \$30.2 million for 2018-19 already allocated from the state's general fund.

2016

- City of Las Vegas Public Works Department starts Shadow Lane Improvement project along with LVMD Sidewalk Infill program
- Clark County Health District's Shadow Lane Campus transfer to UNLV School of Medicine is approved
- UNLV Ackerman Autism Center opens
- ACGME accreditation is granted to medical school as an institutional sponsor of graduate medical education
- UNLV School of Medicine achieves preliminary accreditation by the Liaison Committee on Medical Education (LCME)

2015

- Las Vegas City Council approves updated LVMD Master Plan
- Steinberg Diagnostic Medical Imaging building opens
- Founding Scholarship campaign for UNLV medical school secures \$13.5 million
- State funds released for medical school
- Dr. Atkinson is named Founding Dean of medical school

2014

- Planning Dean for medical school, Dr. Barbara Atkinson, is hired
- UNLV School of Medicine officially established
- Community Advisory Board for medical school established
- Sands Cares donates \$75,000 to UNLV School of Dental Medicine's dental clinic
- City of Las Vegas invests \$200,000 to develop LVMD Master Plan

2013

- Vision for UNLV School of Medicine is established
- Economic Impact Report commissioned for four-year allopathic Public Medical Education Plan is approved for medical school by NSHE Board of Regents

NOTE: The Las Vegas Medical District was established by the Las Vegas City Council in 1997



INTERNATIONALLY ACCLAIMED BRAIN RESEARCH

WE ARE HERE

Aaron Ritter, MD, Cleveland Clinic Lou Ruvo Center for Brain Health, takes a patient's history and discusses next steps for optimal brain health.

ADVISORY COUNCIL

The Las Vegas Medical District Advisory Council reviews and makes recommendations on elements that further the community's interest, including planning of the area, land use, new medical business and expansions. The committee also sets the vision for the district, which provides a guide for the membership.

CITY OF LAS VEGAS

Councilman Brian Knudsen
Ward 1, Chairman

Scott Adams
City Manager, Advisory
Council Founder & Chair
Emeritus

Tera Anderson
Redevelopment Manager

Jorge Cervantes
Chief Operations &
Development Officer

Kimberly Reid
Office of the Mayor

Dorian Stonebarger
Ward 1

Eryn Sebelius
Marketing & Public
Information Officer

CLARK COUNTY

Lawrence Weekly
Commissioner, District D

Tick Segerblom
Commissioner, District E

Randy Tarr
Assistant County Manager
Clark County

CLARK COUNTY CREDIT UNION

Matt Kershaw
President &
Chief Executive Officer

CLARK COUNTY MEDICAL SOCIETY

Denise Selleck
Executive Director

CLEVELAND CLINIC LOU RUVO CENTER FOR BRAIN HEALTH

Erick Vidmar
Administrative Director

COMPREHENSIVE CANCER CENTERS OF NEVADA

Jon Bilstein
Chief Executive Officer

CROSSROADS OF SOUTHERN NEVADA

Kevin Morss MS,
Chief Executive Officer

DESERT RADIOLOGY

Dr. Randal Shelin
Shareholder

FIRSTMED HEALTH & WELLNESS CENTER

Dr. Angela Quinn
Chief Executive Officer &
President

Jeff Wells
Chief Financial Officer

FUNDAMENTAL CLINICAL AND OPERATIONAL SERVICES, LLC

Scott Hillegass
Chief Executive Officer

HEALTHY MINDS LAS VEGAS

Dr. Lisa Durette
Medical Director

KATZ LAW GROUP, LLC

Daryl Alterwitz
Attorney

LAS VEGAS GLOBAL ECONOMIC ALLIANCE

Jonas Peterson
President &
Chief Executive Officer

LAS VEGAS HEALS

Doug Geinzer
Chief Executive Officer

LAS VEGAS METROPOLITAN POLICE DEPARTMENT

Captain Yasenia Yatomi
Bolden Area Command

METRO CHAMBER OF COMMERCE

Vicky VanMeetren
Board Member

MILAN INSTITUTE

Christopher Moderson
Campus Director

OPTUM CARE NEVADA SOUTHWEST MEDICAL ASSOCIATES

Dr. Robert McBeath
President &
Chief Executive Officer

SOUTHERN NEVADA HEALTH DISTRICT

Dr. Fermin Leguen
Acting District Health Officer

STEINBERG DIAGNOSTIC MEDICAL IMAGING

Dr. David Steinberg
Managing Partner

Jerry Hartman
Chief Executive Officer

TOURO UNIVERSITY NEVADA

Dr. Wolfgang Gilliar
Dean of the College of
Osteopathic Medicine

UMC

Mason VanHouweling
Chief Executive Officer

Dr. Marcia Turner
Chief Administrative Officer

UNLV SCHOOL OF MEDICINE

Dr. Marc J. Kahn
Dean

Dr. Michael Gardner
Vice Dean

UNLV SCHOOL OF DENTAL MEDICINE

Dr. Lily T. Garcia
Dean

UNLV SCHOOL OF NURSING

Dr. Angela Amar
Dean

VALLEY HOSPITAL MEDICAL CENTER

Claude Wise
Chief Executive Officer &
Managing Director

WOMEN'S CANCER CENTER OF NEVADA

Dr. Nick Spirtos
Medical Director

RENDERING OF FUTURE UNLV SCHOOL OF MEDICINE



Actual development may vary. No guarantee can be made that development will proceed as described. Any artist renderings are for illustration purposes only, based upon current development concepts, which are subject to change without notice.

UNLV SCHOOL OF MEDICINE OVERVIEW

The UNLV School of Medicine is a full-scale, four-year allopathic medical school with a mission of improving access to high-quality health care in Southern Nevada by increasing the number of physicians and trained specialists committed to serving the region.

The school currently has 180 medical students and more than 150 faculty physicians, along with 300+ residents and fellows. UNLV Medicine is the clinical arm of the school, operating 17 clinics specializing in everything

from pediatrics to gastroenterology. Approximately 10,000 patients per month are seen at the clinics.

One of the primary goals of the UNLV School of Medicine is to provide diverse and medically underserved populations access to timely, high-quality health care. The accompanying Academic Health Center will serve as the core infrastructure for the entire medical community and generate top-quality research that spans the basic and clinical sciences.

MILESTONES

- Donors have agreed to pay for construction of a Medical Education Building that will serve as the school's permanent campus. It will be located in the Las Vegas Medical District on nine acres of currently vacant land at 625 Shadow Lane. According to Governor Steve Sisolak, more than \$155 million dollars has already been pledged towards the project.
- **Achieved preliminary accreditation in October 2016 and welcomed its first class of students in July 2017.**
- The newly remodeled Shadow Lane campus provides 20,000 square feet and includes classrooms for microscopy and demonstrations, a virtual anatomy laboratory, a medical library, small group study rooms, a student lounge, a recreational gym and student locker space.
- **Launched clinical practice (UNLV Medicine) July 2017**
- **Inaugural class graduates in May 2021**

ECONOMIC IMPACT

The UNLV School of Medicine is expected to have the following impacts by 2030, according to Tripp Umbach:

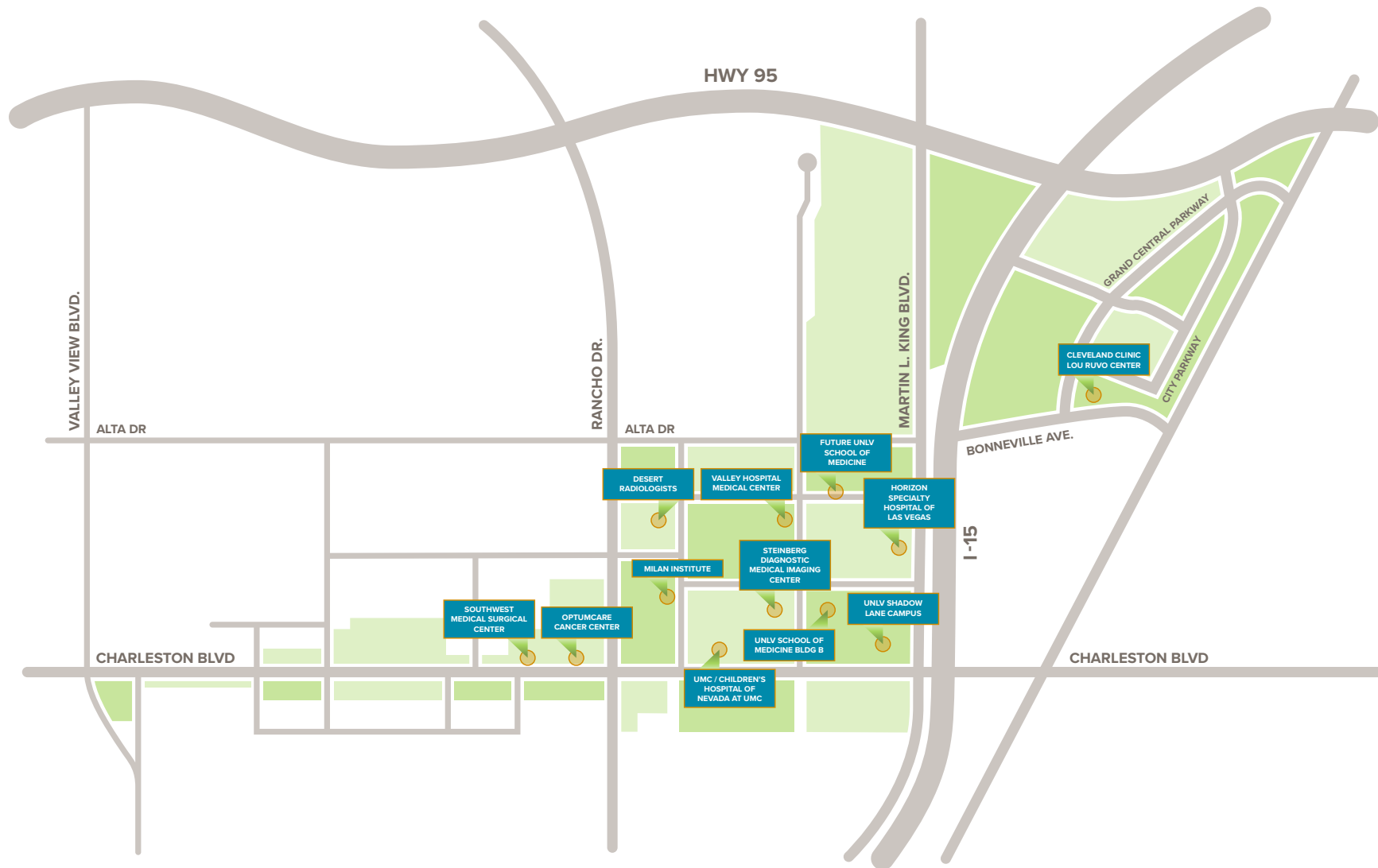
- **Economic impact: \$1.2 billion**
- **Employment impact: 8,000 jobs**
- **State General Fund revenues: \$60 million**
- **ROI to State General Fund: \$1.15 generated for every \$1.00 of investment in UNLV School of Medicine**

ACADEMIC HEALTH CENTER

UNLV is creating Southern Nevada's first regional Academic Health Center. An academic health center will establish a robust system of medical facilities and services, including but not limited to a medical school; one or more additional health profession schools and an affiliated teaching hospital. There are approximately 45 Academic Health Centers in the country. Thus, the establishment of an Academic Health Center is a huge advancement for the region.

UNLV ACADEMIC HEALTH CENTER IS COMPRISED OF

- The UNLV School of Medicine and the university's health science schools including nursing, allied health, public health, and dentistry. All five schools eventually will locate to the Shadow Lane campus near UMC.
- University Medical Center serves as the school's primary teaching hospital. The school is actively developing more innovative clinical programs, expanding the scope of residency programs and developing advanced clinical research programs.
- An integrated network of regional health care delivery institutions including private hospitals, private medical schools, a VA hospital, rehabilitation facilities, research institutes, nursing homes, and community health centers.



CONTACT INFORMATION:

Bill Arent

Director of Economic and Urban Development
City of Las Vegas

PHONE 702.229.6856

EMAIL barent@lasvegasnevada.gov

495 S. Main St., 6th floor | Las Vegas, NV 89101

Tera Anderson

Redevelopment Manager
City of Las Vegas

PHONE 702.229.6865

EMAIL tanderson@lasvegasnevada.gov

495 S. Main St., 6th floor | Las Vegas, NV 89101

